



ANANTARA RIVERSIDE BANGKOK RESORT
EMBRACE THE DIVERSITY OF BANGKOK

Anantara Riverside Bangkok Resort invites you to a haven as leisurely or adventurous as you like. Discover the cultural sites of the city, exploring hidden alleys and breathtaking temples. Then bask in the serenity of your urban oasis, defined by tropical beauty and legendary Anantara service. Illuminated by torch-lit jungle paths and the sparkle of city lights, cherish an unforgettable holiday created just as you envisioned it.

Opening Date: 1992

Address: 257/1-3 Charoennakorn Road
Thonburi, Bangkok 10600, Thailand

Telephone: +66 (0) 2476 0022

Facsimile: +66 (0) 2476 1120

Central Reservations: +66 (0) 2365 9111

Central Reservations Email: reserveanantara@anantara.com

Email: bangkokriverside@anantara.com

Web Address: bangkok-riverside.anantara.com





LOCATION

A unique combination of city life and resort luxury, Anantara Riverside Bangkok Resort harmonises the best of both worlds. Only 20 minutes by luxury shuttle boat to the heart of the City of Angels. The resort is dramatically set overlooking the majestic Chao Phraya River. Relax by the pool shaded by tropical gardens. Cherish early morning tea on the balcony overlooking the river. Explore the delights of Bangkok just outside our gates. However you envision your holiday, experience it here.

Management: Anantara Hotels, Resorts & Spas

Ownership: Minor International

General Manager: Graeme Stewart Ure
gure@anantara.com

**Complex Director of Sales
and Business Development:** Supachai Punja-apisith
supachai_pu@minor.com



ACCOMMODATION

Located in all of the resort's three main buildings, our guest rooms and suites embody the simple yet elegant Asian style found throughout the resort's impeccably landscaped grounds. In each spacious room, Thai inspired design creates an environment of urban serenity. Natural light spills through large windows of our Bangkok resort, illuminating rich colours of Thai silks and the warm brown hues of hardwood floors, private balconies offer city, garden or river views and fine wood furniture echoes the colours and feel of a traditional Thai home. A full range of modern amenities ensures a stay filled with ease and comfort.

Deluxe Room (38 sqm)

Enjoy city or garden views from your private balcony, or as you relax inside the beautifully appointed bedroom, featuring high ceilings and expansive windows.

Relax into a charming stay at our luxury hotel in Bangkok. Reflecting traditional Thai culture in a modern, abstract expression, backlit mirrored panels, etched inscriptions and the warmth of solid makha wooden flooring is balanced by the softness of rich Thai silk. Step through to a luxury bathroom with marble features. Make your morning tea or coffee to sip outside, and later select your favourite mini bar refreshments and catch up with the world online, or unwind with an evening movie.

Deluxe Junior Suite (46 sqm)

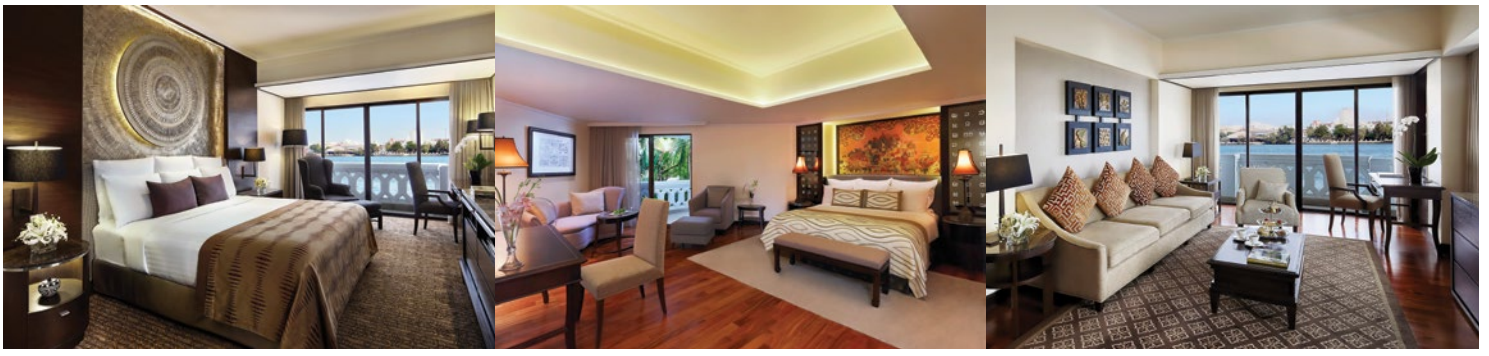
Enjoy the comforts of luxury with your private balcony and floor to ceiling windows, with Thai imagery beautifully illustrating the contemporary senses of this riverside haven.

Traditional Thai touches are reflected in the backlit bed headboard as with the ancient etched inscriptions. The interior features include high ceilings with uplighting and are tastefully furnished with a sofa and a writing desk that allows you to work from the comfort of your suite. The magnificent bathroom with its marble floors offer generous space and exclusive amenities either you are travelling on your own or as a couple.

Deluxe River View Room (38 sqm)

Wake up to exceptional Chao Phraya River views from one of the most enchanting riverside hotels in Bangkok, refreshed by a gentle breeze from your private balcony.

Hideaway in contemporary Thai style, designed with backlit mirrored panels, etched inscriptions, solid makha wooden flooring and exquisite Thai silk. Space is redefined by expansive windows and high ceilings, while a marble adorned bathroom with a rain shower offers total privacy, with sliding doors that open onto the bedroom for a wonderful extension of space



Deluxe River Front Room (38 sqm)

Making the most of our enviable waterfront location, Deluxe River Front Rooms look directly upon the majestic Chao Phraya River. Inside, elegant modern twists on classic Thai design include solid makha wooden flooring, rich silks, etched inscriptions and sultry backlit mirrored panels. Watch age old river life unfolding into an ambient sunset and magical nights from your writing desk and armchair beside the expansive window. A luxurious marble bathroom invites you to refresh under the rain shower or enjoy an indulgent soak in the tub, with the option of extending the feeling of space by sliding open the doors connecting to the bedroom.

Junior River View Suite (46 sqm)

Admire wonderful vistas of the Chao Phraya River from your private balcony and through floor to ceiling windows, with an interior of imaginative, contemporary style reflecting a true sense of destination.

Timeless Thai culture is depicted in ancient etched inscriptions adjacent to the backlit bed headboard which displays traditional artwork. Uplighting enhances the dramatic high ceiling. Elegant furnishings of a sofa and writing desk invite you to work online and watch television in total comfort. The opulent bathroom offers ample space and luxury amenities for couples. While relaxing is a pleasure with a soft river breeze drifting in from the balcony, and music from your iPod setting the perfect mood.

Kasara privileges offer a wide range of exclusive benefits and experiences to add to a memorable stay.

Anantara River Front Suite (108 sqm)

With a wrap around balcony providing a sweeping panorama of lush gardens, the Chao Phraya River and cityscape beyond, these magnificent suites present some of the most enchanting views that a Bangkok river hotel can offer.

Indulge in true Anantara luxury and generous, separate living spaces. The carpeted bedroom features an iconic piece of Thai handicraft on the backlit headboard, an LCD TV and DVD player, a writing desk and also an elegant armchair with foot stool positioned for a view through floor to ceiling windows. Walk through to the living area with a gleaming wooden floor to find dining furniture seating four, a full sofa set, a second LCD TV and DVD player, as well as an iPod dock. The gracious bathroom is equally impressive, with dual vanity basins, a refreshing rain shower and indulgent soaking tub.

Exceptional Kasara benefits ensure that your stay feels highly exclusive and truly indulgent.



Two Bedroom River View Chao Phraya Suite (114 sqm)

Breathtaking river views and extravagant space epitomise these sumptuous two bedroom suites, offering an impeccable stay for families or friends travelling together.

Smooth clean lines with a whitewash finish complement contemporary Thai-inspired artistry. Elegantly furnished bedrooms adjoin marble floor bathrooms, each featuring a generous bathtub, separate rainforest shower and designer amenities. Delight in meals at the sophisticated dining area and flowing space opening onto a well-appointed lounge and a waterfront vista. With a wine cooler, two mini bars, an iPod dock and three LED TVs and DVD players offering entertaining and relaxing pleasures, these suites feel wonderfully decadent.

Exclusive Kasara privileges promise the ultimate Anantara experience.

Room Features

- Balcony with river, city or garden view
- King or twin bed
- Spacious lounge area
- Select suites come with double vanity sinks
- Separate bathtub, shower and toilet
- In-room mini bar
- LCD TV
- Tea & Coffee Making Facilities – Deluxe Room
- Tea & Nespresso Coffee Making Facilities – all other room categories
- Complimentary internet access via WiFi

Guest Services

- Business Centre
- Concierge
- Babysitting
- Valet parking
- Meeting and banquet facilities
- Kasara benefits
- Wedding facilities
- Complimentary luxury boat service to the Saphan Taksin skytrain station / Robinson Department Store and downtown area (By scheduled).
- Shopping and entertainment within walking distance at Riverside Plaza.

Recreation and Leisure

Invigorate before a meeting with a riverside yoga session, or wind down at the end of the day with a well deserved spa experience. Take your best swing at a wonderful choice of golf courses. Fire up fresh ideas with a cooking class at The Market restaurant or as you journey down the river aboard a Manohra Dining Cruise. Discover Bangkok's famous attractions or step behind the tourist scenes with intriguing local experiences, such as a longtail boat tour of the city's fascinating canal maze.

- Anantara Spa
- 24 hours Fitness Centre, sauna and steam room
- Floodlit Tennis courts
- Daily Thai cultural show
- Muay Thai boxing ring
- Nightly live music
- Swimming pool from 6.00 am - 10.00 pm
- Jacuzzi from 8.00 am - 8.00 pm
- The Chang Noi Club for children
- Spice Spoons - Anantara cooking school
- 8 nearby golf courses
- Swim up bar



Kasara Guest Benefits

- Personalised service by our Kasara Concierge
- Personalised check-in and check-out
- International breakfast buffet at The Market restaurant, or a pre-ordered selection available in the lounge
- All day refreshments of non-alcoholic beverages, TWG tea and coffee
- Afternoon High-Tea with pastries and TWG tea and coffee
- Pre-dinner 'Sundowners' with cocktails, wines, selected beverages and canapés
- Unlimited WiFi throughout the hotel
- Complimentary iPad, available for use at the Kasara Lounge only
- Complimentary late check-out at 2.00 pm (subject to availability)
- Complimentary meeting room usage at Business Centre for one hour per day (subject to availability)
- 25% savings at the 'Elephant Bar' daily from 8.00 pm until late
- 15% savings on all single Anantara Spa Treatments
- Unlimited garment pressing services
- 25% savings for Laundry and Dry-cleaning services

Room Type	Total	Room Size (M ²)	Balcony Size (M ²)	Accept Roll Away	Max Adults	
Deluxe Room	148 Rooms		38	3	Yes	2
	58 King	90 Twin				
Deluxe Junior Suite	37 Suites		46	4	Yes	3
	27 King	10 Twin				
Deluxe River View Room	97 Rooms		38	3	Yes	2
	57 King	40 Twin				
Deluxe River Front Room	36 Rooms		38	3	Yes	2
	25 King	11 Twin				
Family Suite	5 Suites		46	4	No	3
	(King + Single)					
Junior River View Suite	26 Suites		46	4	Yes	3
	19 King	7 Twin				
Anantara River Front Suite	25 Suites		108	23	Yes	3
	22 King	3 Twin				
Two Bedroom River View Chao Phraya Suite	2 Suites		114	12	N/A	4
	(King / Twin)					
TOTAL	376					

RESTAURANTS AND BARS



Savour the tastes of Italian home-style cooking at Brio. Choose from an array of traditional favourites including fresh handmade pastas prepared in the restaurant, pizzas handcrafted from a centrally positioned wood-fired oven and Italian salads freshly made with herbs from the hotel's own hydroponic garden. Complement each dish with the perfect wine from our vast fine Italian wine collection and select beverages. The Little Italy corner offers delicatessen selection of cured meats and Italian cheeses along with a varied choice of pastas and sauces for guests wishing to take the Brio experience home.

OPENING HOURS: 12.00 noon - 10.00 pm
CUISINE: Italian
SEATING CAPACITY: 95 people with 3 semi private rooms seating 6 - 20 people



Take in an authentic cultural performance as you dine by the majestic Chao Phraya. The mythical tales of Hanuman, the magical monkey warrior who journeys from heaven to earth is performed daily by a local dance troupe. Feast on a buffet of regional Thai dishes, fresh seafood on ice, barbecued prime meats, fresh salad from our hydroponic farm, and a speciality Indian station. Sample traditional Thai desserts and an exotic array of fresh fruits.

CUISINE: Seafood and BBQ Buffet Dinner
SEATING CAPACITY: 250 people



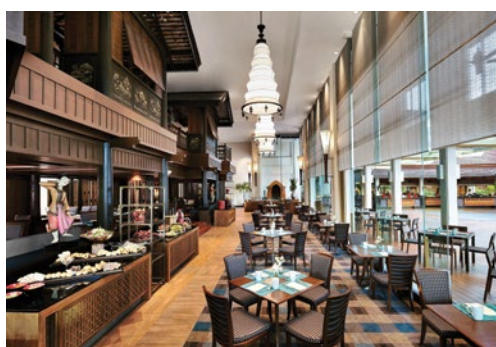
A global name for over 75 years, Trader Vic's serves the finest Pacific Rim cuisine, including unique tastes cooked in Bangkok's only Chinese wood fired oven. Toast tranquil views of the capital's majestic River of Kings from the River Deck with signature Trader Vic's Mai Tai cocktails. Enjoy exotic culinary journeys that are enhanced by fantastic live music, as well as the ambient settings of a Polynesian inspired dining room and tropical riverside garden.

OPENING HOURS: **Breakfast:** 7:00 am - 10:30 am
Dinner: 6:00 pm - 11:00 pm
Sunday Brunch: 12.00 noon - 3.00 pm
CUISINE: Polynesian and Tropical Pacific Rim Bar and Restaurant
SEATING CAPACITY: Indoor 70 people and outdoor 60 people



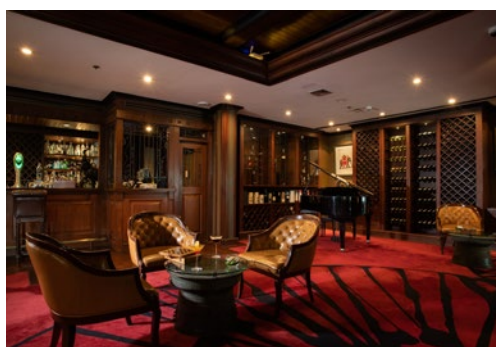
Talented chefs create sumptuous Teppanyaki dishes with dazzling theatrical cooking displays, promising unforgettable “eatertainment” at every table. Alternatively select from an à la carte menu of hand crafted sushi, sashimi and signature rolls.

OPENING HOURS: Lunch: 11.30 am - 2.30 pm
 Dinner: 5.00 pm - 10.30 pm
 Saturday Brunch: 12.00 noon - 3.00 pm
CUISINE: Japanese Teppanyaki
SEATING CAPACITY: Teppanyaki 90 people, 1 private rooms for 10 people, 1 private area for 22 people, and Sushi bar for 5 people



Start each day with an international breakfast buffet or delicious à la carte options. Dine in the Asian inspired dining room featuring floor to ceiling windows, or on the al fresco terrace with tropical garden and river views.

CUISINE: International
SEATING CAPACITY: 130 people (Indoor) 250 people (Outdoor)



Elephant Bar

Our colonial, Asian inspired lounge bar is the ideal venue for pre-dinner cocktails, relaxing evening nightcaps, or to watch live televised sports.

SEATING CAPACITY: 60 people



Shaded by a lush tropical garden on the banks of the Chao Phraya river, a cafe-studio captures the essence of “Maa Laa” – an ancient word for an elegant garland. Refuge seekers reconnect over perfect pastries, quality coffee and exquisite cakes. Inspiration awaits in the studio with workshops on tea blending and perfume making. Art adorns the walls and beautiful blooms fill the flower shop at Maa Laa.

OPENING HOURS: 8.00 am - 8.00 pm
CUISINE: Light Snack, Sandwiches, Cakes
SEATING CAPACITY: 50 people



The riverside is the perfect place to unwind with a drink, take in the view, sunset and cool breeze. Snack on rustic Thai cuisine from around the kingdom. Explore the world of Thai craft beer and exotic cocktails.

OPENING HOURS: 3.00 pm - 11.00 pm

SEATING CAPACITY: 80 people



Swim up to the bar for all-day concoctions of signature smoothies and fruity cocktails. Laze by the pool with pizza from the oven delivered straight to your sunbed. Loy Nam offers all-day snacks and an indulgent array of burgers to savour.

OPENING HOURS: 10.00 am - 7.00 pm

SEATING CAPACITY: 50 people



Step aboard a beautifully restored antique rice barge and cruise in old world elegance along the River of Kings. Pass famous royal sites, exquisite temples and striking modern landmarks as you enjoy an enchanted evening dinner cruise.

THAI SET DINNER CRUISE: 7.30 pm - 9.30 pm

SEATING CAPACITY: 30, 40 and 70 people per boat



Choose from a collection of connoisseur menus. Hideaway in a riverside Thai sala or cruise along the Chao Phraya aboard the Anantara Dream. Toast the ultimate in romantic dining, as a private butler tends to your every need.



Spice & Barley

A unique restaurant presents a modern interpretation of regional Chinese cuisines. Located at Riverside Plaza on the Chao Phraya, a sleek ambience is paired with award-winning recipes.

OPENING HOURS: Friday - Sunday: 12.00 noon - 3.00 pm | 5.00 pm - 10.00 pm

CUISINE: Chinese, Sichuan

SEATING CAPACITY: 60 people indoor and outdoor terrace
40 people



CONFERENCE AND MEETING FACILITIES

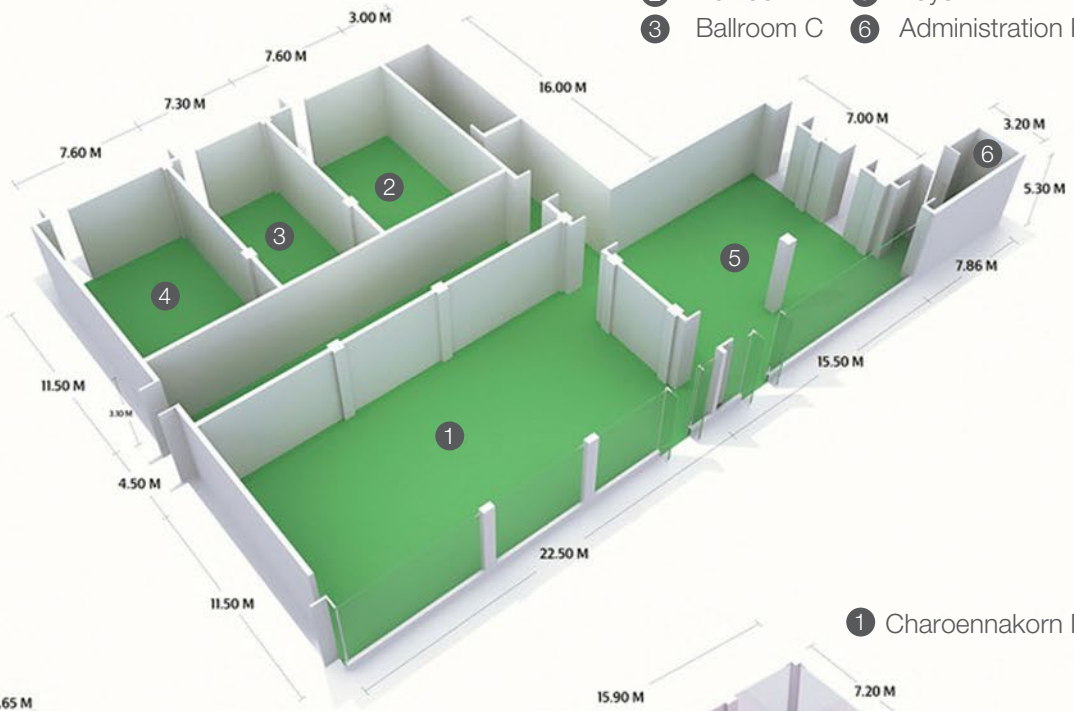
A choice of 12 versatile meeting venues are embraced by tropical nature and flooded with natural light to spark imagination during even the most intensive business sessions.

Our meeting and event spaces create a great impression and have been increased by more than 1,500 square metres to offer capacity for as many as 600 delegates. Enjoy the convenience of state of the art audio visual systems. While the elegance of Thai silk padded walls and impressive entrance doors make the Chaophraya Ballroom ideal for a lavish occasion.

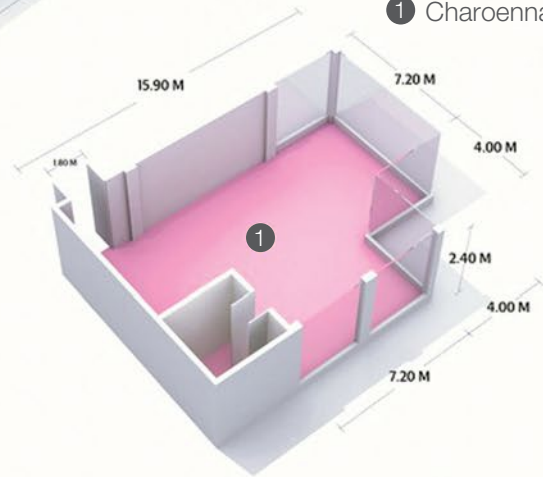
Meeting rooms	Area		Dimension (WxLxH)		Theatre	Classroom	U-Shape	Banquet 10	Cocktail	Boardroom	H-Shape
	M ²	F ²	Metres	Feet							
Chaophraya Ballroom	619	6,657	22.5x27.5x5.3/3.1	73.8x90.2x17.3/10	550	350	-	540	600	-	-
Ballroom A	260	2,782	11.5x22.5x5.3	37.7x73.8x17.3	200	120	50	120	200	-	60
Ballroom B	88	939	7.6x11.5x3.1	24.9x37.7x10.2	60	42	25	50	60	23	30
Ballroom C	88	939	7.6x11.5x3.1	24.9x37.7x10.2	60	42	25	50	60	23	30
Ballroom D	88	939	7.6x11.5x3.1	24.9x37.7x10.2	60	42	25	50	60	23	30
Ballroom B/C/D	260	2,782	11.5x22.5x3.1	37.7x73.8x10.1	180	100	45	150	200	60	70
Charoennakorn Room	144	1,912	11.2x15.9x2.4	36.7x52.1x7.9	100	45	40	70	90	35	40
Thonburi Room	106	1,372	11.1x11.5x2.4	36.4x37.7x7.9	50	33	24	30	50	22	26
Garden Room	300	3,760	17.5x20x3.2	57.4x65.5x10.5	180	120	40	180	200	34	45
Jasmine Room	80	686	8x8x2.8	26.2x26.2x9.2	45	30	24	30	30	20	24
Bamboo Room	20	161	3x5x2.8	9.8x16.4x9.2	-	-	-	-	-	10	-
Poppy Room	20	161	3x5x2.8	9.8x16.4x9.2	-	-	-	-	-	10	-
Lotus Room	32	343	4x8x2.8	13.1x26.2x9.2	-	-	-	-	-	12	-
Business Centre	32	344	4.4x7.3x2.4	14.4x23.9x7.9	-	-	-	-	-	12	-
Grand Sala	-	-	-	-	-	-	-	120	150	-	-
Riverside Terrace	-	-	-	-	-	-	-	-	250	-	-
Trader Vic's	-	-	-	-	-	-	-	-	150	-	-
Trader Vic's Garden	-	-	-	-	-	-	-	-	70	-	-

FLOOR PLANS

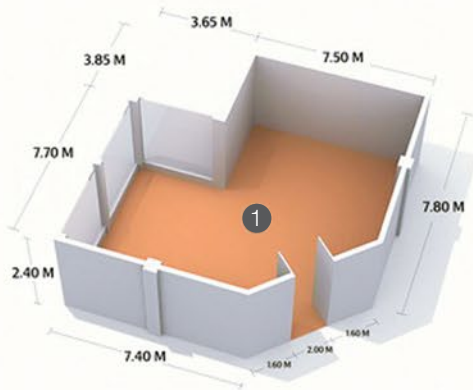
- ① ② ③ ④ Chaophraya Ballroom
- ① Ballroom A ④ Ballroom D
- ② Ballroom B ⑤ Foyer
- ③ Ballroom C ⑥ Administration Room



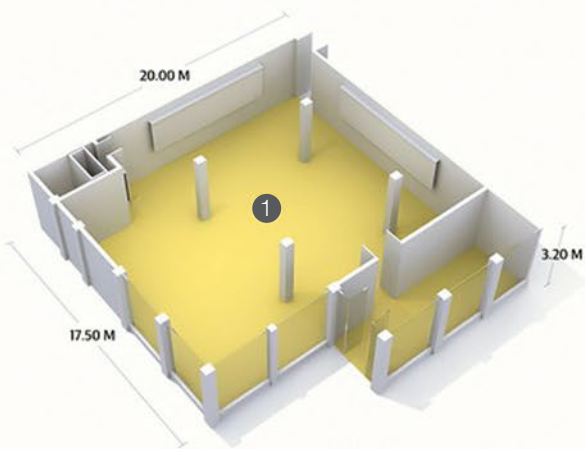
① Charoennakorn Room



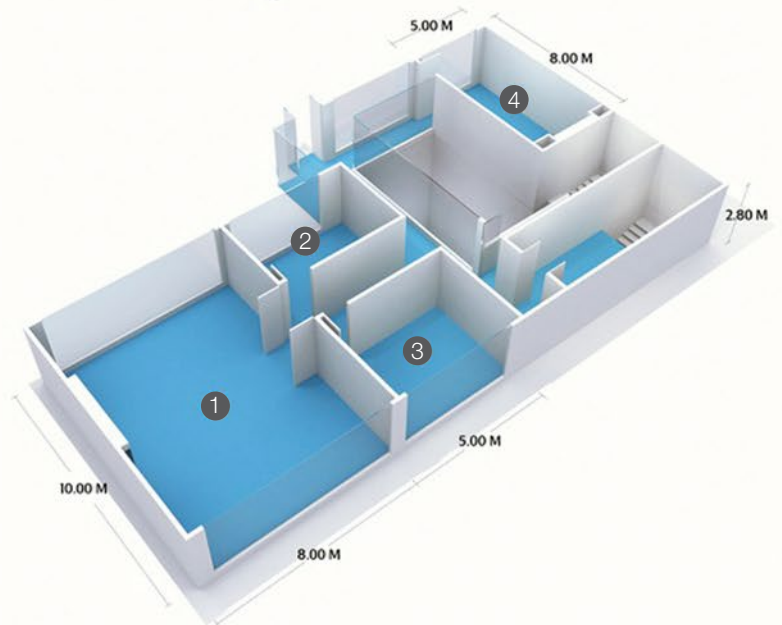
① Thonburi Room



① Garden Room



- ① Jasmine Room ③ Poppy Room
- ② Bamboo Room ④ Lotus Room





TAILORED EVENTS

Our experienced team of professionals specialise in tailored events and can combine any setting, theme, cuisine, entertainment and activity to suit your group's individual needs.

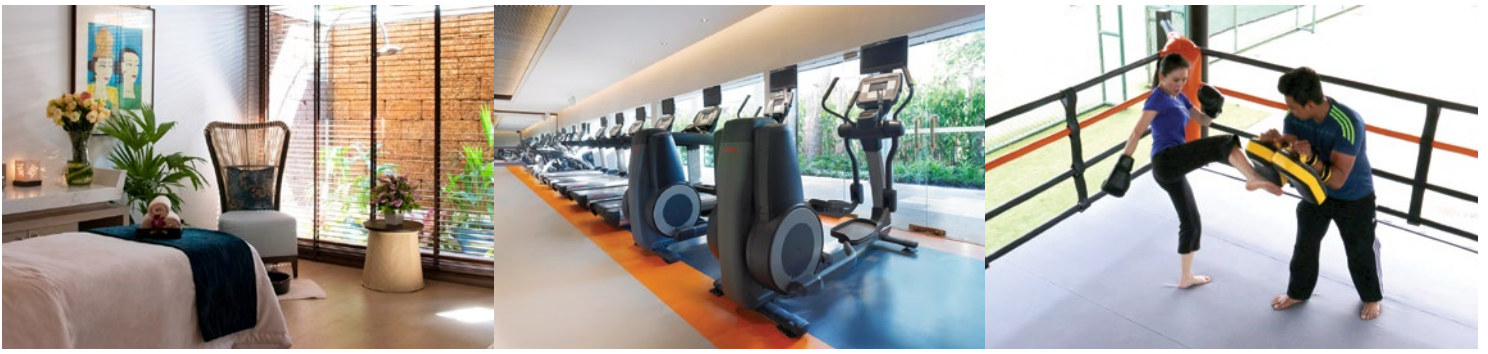
Transform an executive session into a comfortable and inviting set up by adding beanbags or Thai cushions to recline on. Re-energise during a meeting with a creative coffee break, or replenish with a garden picnic. Let the real Bangkok come to you, courtesy of themed tuk-tuk or floating market dining concepts. Party aboard a Manohra Dining Cruise, where voyages of luxurious discovery are inspired by a choice of enterprising themes. Alternatively collaborate with our expert culinary team and combine your own ideas with our imaginative suggestions to create an unforgettable occasion.

WEDDINGS AND SPECIAL OCCASIONS

Share your first dance as husband and wife against the majestic backdrop of the Chao Phraya River. Exchange vows on a covered bridge overlooking gardens in full bloom. Celebrate with family and friends aboard a sunset Manohra Dining Cruise.

Select from our stylish indoor and outdoor wedding venues in Bangkok to create the wedding you always dreamed of, whether it is an elaborate ceremony stretching over a series of days or an intimate ceremony just to be shared between two.

Celebrate a most memorable wedding in Bangkok at Anantara Riverside Bangkok Resort. We will take care of all the details transforming your fantasy wedding into an unforgettable memory.



ANANTARA SPA

An oasis within an oasis, our tranquil spa sanctuary invites you to embark upon a revitalising journey. Indulge in a blissful individual experience or romantic side by side ritual in one of nine private treatment rooms, including two couple's suites with a large bathtub inside and a private garden courtyard with an exotic rain shower and traditional sala.

Let healing, intuitive hands alleviate stress and balance body, mind and spirit, with an extensive choice of holistic ancient remedies and dynamic contemporary techniques that restore wellbeing and radiant natural beauty.

Signature Treatment

Signature Rice Ritual

Skin is cleansed and polished with a scrub that is rich in antioxidants, as well as nourishing B and E vitamins. A full body massage incorporates a specially blended rice bran oil, pressure point and stretching techniques, along with a heated rice compress to release tension, pain and stress. While the Anantara Signature Facial combines the perfect blend of nourishing plant extracts and traditional Thai ingredients to treat and revitalise your complexion.

Anantara Signature Massage

Our signature blend of oil, combined with purpose designed movements, stimulates the circulation, promotes deep relaxation and restores the flow of energy, or prana, along the meridian lines.

Spa Facilities

- Steam rooms
- Beauty salon
- Relaxation area
- 2 suite treatment rooms
- 6 deluxe treatment rooms
- 1 single treatment room

Opening hours: 10.00 am - 10.00 pm

Spa treatments between 10.00 pm - midnight available upon advance reservation.

FITNESS CLUB

Our fitness club offers a diverse range of cardiovascular and muscle training equipment to be used at your leisure. Daily classes including yoga, power step and aerobics are designed to help improve your physical wellness.

Opening hours: 24 hours



LOCAL AREA EXCURSIONS

Each day, Anantara features a range of organised and do-it-yourself area excursions that let you see beyond the boundaries of the hotel.

- The Grand Palace and Wat Phra Kaeo
- Wat Pho
- Wat Arun (Temple of Dawn)
- The National Museum
- The National Gallery Museum
- Jim Thompson House
- Phra Thi Nang Vimanmek and Abhisek Dusit Throne Hall
- Chatuchak Weekend Market
- Asiatique, Asia's largest night market for shopping and nightlife
- Riverside Plaza, shopping and entertainment complex
- Streetwise Guru and Klong Guru

LOY PELA VOYAGES

Loy Pela Voyages invites you on an unforgettable voyage aboard the Loy Dream and Loy River Song. Encounter historic ruins and traditional rustic villages. Relax into the steady flow of river life and marvel at the breathtaking natural beauty, from the comfort of your sundeck. Experience the vibrant culture and customs of Thailand, complemented by the unique and unparalleled service of Loy Pela Voyages.

Loy River Song features:

- 4 dream staterooms with private ensuite bathrooms
- Upper decks for living and dining
- 24-hour in-cabin dining
- Luxury bath amenities
- Jim Thompson bathrobes
- In-room safe

Loy Dream features:

- 2 air-conditioned staterooms with private ensuite bathrooms
- Spacious upper deck with lounge area
- Sun deck
- Captain, Chief and Assistant Steward, Personal Chef and First Mate on board
- Breakfast, lunch, afternoon tea and a sumptuous evening meal
- Full bar and kitchen on board

For more information on Loy Pela Voyages and the cruise itinerary, please visit loypelavoyages.com

