



ANANTARA

GRAND HOTEL  
KRASNAPOLSKY AMSTERDAM



Amsterdam's  
crown jewel



# Welcome to Anantara Grand Hotel Krasnapolsky Amsterdam

What was once a small coffee house run by Mr. Krasnapolsky, today charms visitors with luxurious accommodation, indulgent dining and unique experiences.

After days spent exploring the cultural and heritage charms of Amsterdam, guests return to relax at Ananatra Spa, savour exquisite cuisine at Michelin-starred restaurant The White Room, sip cocktails at Bar The Tailor and rest in rooms and suites overlooking the city.





# Location

Presiding over Dam Square with views of the national Royal Palace, Anantara Krasnapolsky is perfectly positioned in the historic heart of the city just a short stroll from Amsterdam Central Station.

With designer shopping, heritage experiences, delectable dining and world-class museums all right on the doorstep, guests find themselves in the ideal location to experience the best of what Amsterdam has to offer.

# A tailor's tale

The magnificent historic building now home to a luxurious hotel dates back to 1856, but our story starts in 1866, when Mr. Adolph Wilhelm Krasnapolsky opened a coffee house on the site that is now Grand Café Krasnapolsky. As the café grew in popularity, he added rooms for rent, eventually transforming the building into a modern hotel.

Today, Anantara Krasnapolsky wears its history proudly, adorned throughout with images from the old days. The interior design of Bar The Tailor pays tribute to Mr. Krasnapolsky's first profession – tailoring. And while guests can still indulge in freshly baked delights at Grand Café Krasnapolsky, they can also savour gastronomic marvels at Michelin-starred restaurant The White Room.

With centuries of fascinating history, Anantara Grand Hotel Krasnapolsky Amsterdam ensures guests enjoy stays to remember, filled with tales to tell.



Grand Café Krasnapolsky



# Accommodation

Anantara Grand Hotel Krasnapolsky Amsterdam welcomes guests in 402 rooms and suites that blend contemporary style and Anantara's signature touches. Guests relax in comfort amid soothing natural colour schemes and chic, modern design accents, with stunning city views and luxurious features.



Royal Suite

### DELUXE ROOM

Epitomising modern Dutch design, Deluxe Room feature a serene palette of beiges and whites, polished parquet flooring, and expansive windows that bathe the cosy space in natural light. Indulge in supreme comfort with a pillow menu, Nespresso machine and a minibar stocked with locally sourced snacks and refreshments.

### PREMIUM ROOM

Ideal for couples seeking more space or those travelling with a child, the Premium Room offers all the luxuries of city life in true Anantara style. A striking palette of black and crimson is complemented by white linens and natural wood flooring. Enjoy in-room amenities including a Nespresso machine and a minibar filled with local treats and beverages.

### GRAND PREMIUM ROOM

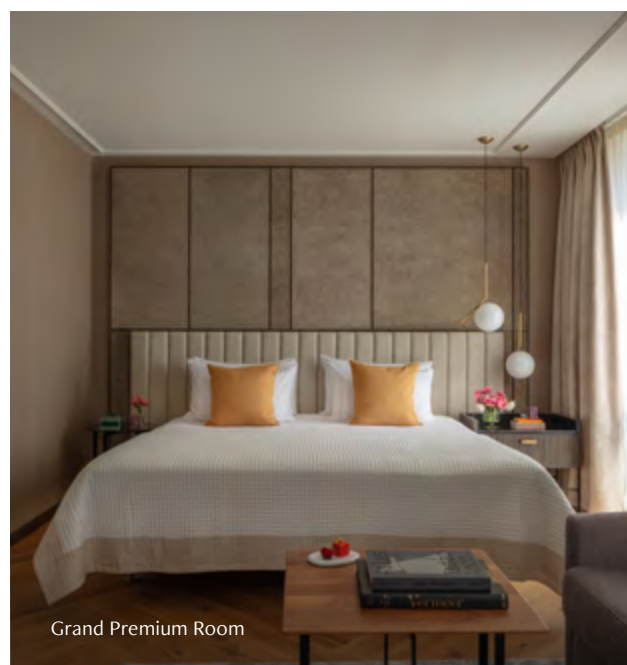
A luxurious home-from-home in the city centre, the Grand Premium Room accommodates up to three guests, with space for an extra bed and ample room to relax. Unwind in an armchair with a fresh espresso or catch up on work at the desk.

### PREMIUM DAM VIEW ROOM

With the vibrant energy of Dam Square visible through oversized windows, these stylish rooms boast some of the city's finest views. Admire the opulent Royal Palace, gothic Nieuwe Kerk, and imposing National Monument from the comfort of your armchair.

### GRAND PREMIUM DAM VIEW

Savour views of the magnificent Dam Square from your bed, semi-open bathroom, or plush armchair. Oversized windows flood this impressive space with natural light, perfect for working or enjoying the morning newspaper in your spacious city retreat.





Rooftop Terrace Premium Room

### ROOFTOP TERRACE PREMIUM ROOM

Memorable days begin with invigorating fresh air and conclude with candlelit alfresco dinners on the private terrace overlooking the city. These top-floor premium rooms offer unrivalled views, with a panorama of Amsterdam's rooftops creating a magical ambience.



Premium Family Room

### PREMIUM TRIPLE ROOM

Perfect for travelling trios, the Premium Triple Room is not only expansive and luxurious but also offers equally comfortable bedding for the third guest. Tailor your restful experience with a pillow menu, relax together with movies on the flat-screen TV and enjoy refreshing beverages from the minibar.

### PREMIUM FAMILY ROOM

Our most spacious room features one king and two twin beds for the whole family to sleep comfortably. Spend your days exploring museums, shopping and dining, then return for family movie time and midnight snacks.

### JUNIOR SUITE

For those looking to work as they travel or enjoy a longer stay, the Junior Suite features an elegant living area for extra space. In-suite conveniences include two flat-screen TVs, all-day espressos and a complimentary minibar with non-alcoholic beverages and local snacks. Guests also enjoy the use of an Anantara Bike, pressing service for two garments per stay, complimentary diamond polishing service with luxury car transfers and complimentary access to Anantara Spa's wet and relaxation areas.



Junior Suite



## SUITE

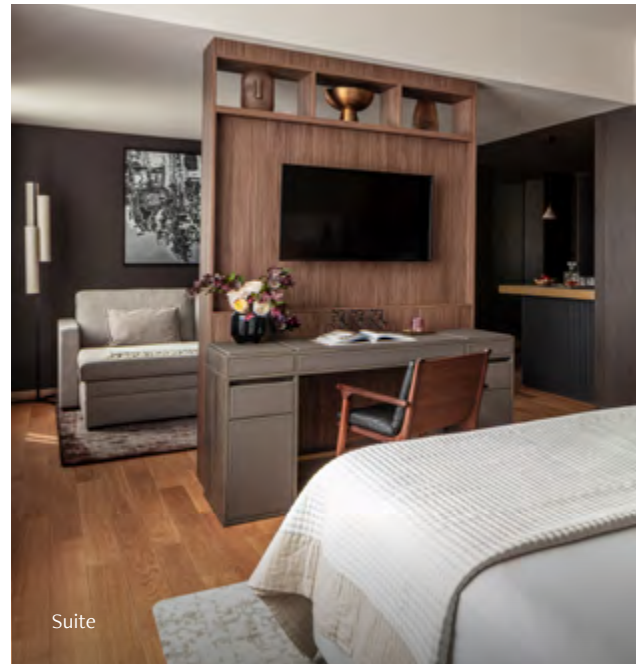
Thoughtfully designed to maximise space and function, suites feature a dining table, sleek work desk, relaxing sofa and a semi-open designer bathroom complete with a soaking tub. Guests also enjoy a complimentary minibar with non-alcoholic beverages and snacks, the use of an Anantara Bike, pressing service for two garments per stay, complimentary diamond polishing service with luxury car transfers and complimentary access to Anantara Spa's wet and relaxation areas.

## CANAL VIEW SUITE

With spacious living, dining and work areas, these stylish suites boast superior amenities and fairytale views of the city's iconic canals. Guests also enjoy a complimentary minibar with non-alcoholic beverages and snacks, EUR 100 food and drink credit to spend at the hotel, the use of an Anantara Bike, pressing service for two garments per stay, a diamond polishing service with luxury car transfers, access to Anantara Spa's wet and relaxation areas, and departure to the airport by luxury car or parking for two nights.

## DAM VIEW SUITE

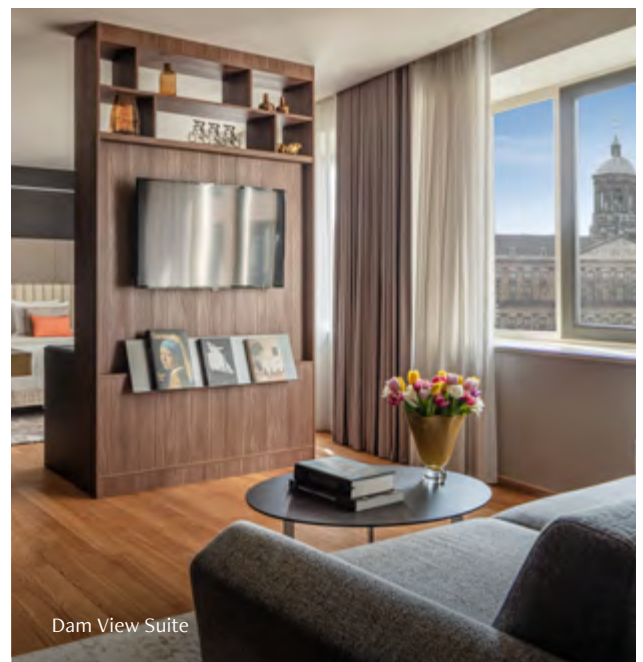
With superior views of the all-day action in Dam Square below, these elegant suites feature a multifunctional living area with space to sleep, dine, work and lounge in style. Guests also enjoy a complimentary minibar with non-alcoholic beverages and snacks, EUR 100 food and drink credit to spend at the hotel, the use of an Anantara Bike, pressing service for two garments per stay, a diamond polishing service with luxury car transfers, access to Anantara Spa's wet and relaxation areas, and departure to the airport by luxury car or parking for two nights.



Suite



Canal View Suite



Dam View Suite





Terrace Suite

## TERRACE SUITE

Spacious open-plan living is set against a sophisticated palette of neutral hues in this luxurious suite. Lounge in your armchair, in your bathtub, or out on your private terrace with sweeping views of Amsterdam's iconic canals and shophouses. Guests also enjoy a complimentary minibar with non-alcoholic beverages and snacks, EUR 100 food and drink credit to spend at the hotel, the use of an Anantara Bike, pressing service for two garments per stay, a diamond polishing service with luxury car transfers, access to Anantara Spa's wet and relaxation areas, and departure to the airport by luxury car or parking for two nights.

## PRESIDENTIAL SUITE ROOFTOP

Two ensuite bedrooms open onto an expansive central living area and the roof terrace enjoys a 180° panorama of Amsterdam's famous canals and rooftops. Presidential Suite guests enjoy a complimentary minibar with non-alcoholic beverages and snacks, EUR 100 food and drink credit to spend at the hotel, the use of an Anantara Bike, pressing service for two garments per stay, a diamond polishing service, access to Anantara Spa's wet and relaxation areas, roundtrip airport transfers and in-suite check-in.



Presidential Suite Rooftop

## ROYAL SUITE DAM VIEW

With an elegant lounge, a dining room that can be converted into a meeting room, and its own pantry, The Royal Suite is ideal for receiving guests. The bedroom and balcony overlook Dam Square and the Royal Palace, while the bathtub offers peaceful views of the city rooftops. Royal Suite guests enjoy a complimentary minibar with non-alcoholic beverages and snacks, EUR 100 food and drink credit to spend at the hotel, the use of an Anantara Bike, pressing service for two garments per stay, a diamond polishing service, access to Anantara Spa's wet and relaxation areas, roundtrip airport transfers, in-suite check-in and luxury bath amenities.



Royal Suite Dam View



Premium Dam View Room

## Room features

- Complimentary high-speed WiFi
- International satellite LED TV
- Chromecast TV
- King or twin beds
- Bathroom with rain shower and / or bathtub
- Hair dryer
- Cotton slippers and bathrobes
- Turndown service
- Work desk
- Personal safe
- Minibar
- Nespresso machine and tea-making facilities
- Telephone with external direct line
- Individually controlled air conditioning
- Luxurious bath amenities by Amouage
- Private balcony
- Dam, rooftop houses and canal views
- Pillow menu
- Connecting rooms available



Junior Suite

### GUEST SERVICES

- Concierge service
- Guest services
- 24-hour business centre
- 24-hour room service
- Valet parking
- Laundry, dry-cleaning and pressing services
- Online boutique
- Anantara Spa & wellness services
- Fitness centre





Presidential Suite

| Room type                    | Total | Room size (ft <sup>2</sup> ) | Room size (m <sup>2</sup> ) | Capacity              |
|------------------------------|-------|------------------------------|-----------------------------|-----------------------|
| Deluxe Room                  | 188   | 280                          | 26                          | 2 adults              |
| Premium Room                 | 119   | 323                          | 30                          | 2 adults              |
| Grand Premium Room           | 12    | 409                          | 38                          | 2 adults + 1 child    |
| Premium Dam View Room        | 15    | 323                          | 30                          | 2 adults              |
| Grand Premium Dam View       | 6     | 377                          | 35                          | 2 adults + 1 child    |
| Rooftop Terrace Premium Room | 15    | 323                          | 30                          | 2 adults + 1 child    |
| Premium Triple Room          | 10    | 409                          | 38                          | 3 adults              |
| Premium Family Room          | 8     | 538                          | 50                          | 4 adults              |
| Junior Suite                 | 9     | 409                          | 38                          | 2 adults + 1 child    |
| Suite                        | 11    | 592                          | 55                          | 2 adults + 2 children |
| Canal View Suite             | 2     | 839                          | 78                          | 2 adults + 2 children |
| Dam View Suite               | 4     | 581                          | 54                          | 2 adults + 2 children |
| Terrace Suite                | 1     | 560                          | 52                          | 2 adults + 2 children |
| Presidential Suite rooftop   | 1     | 1,022                        | 95                          | 4 adults              |
| Royal Suite Dam view         | 1     | 1,614                        | 150                         | 2 adults + 1 child    |

m<sup>2</sup> = square metres, ft<sup>2</sup> = square feet, m = metres, ft = feet

# Restaurants & bars

Founded in 1866 by an entrepreneurial Polish tailor, as a coffee house that flourished into a hotel, Anantara Krasnapolsky builds on its long-standing gastronomic legacy with dining venues evolving with the changing times while staying true to Dutch culinary traditions.

## THE WHITE ROOM

The oldest and most elegant restaurant in Amsterdam is led by Chef de Cuisine Tristan de Boer, who showcases the freshness and variety of the Netherlands' seasonal ingredients. Exquisite tasting menus pair with fine wines in a banquet hall of white and gold that dates back to 1885.

Opening hours: Wednesday – Saturday

Lunch: 12:00 pm – 4:00 pm

Dinner: 6:00 pm – 12:00 am

## GRAND CAFÉ KRASNAPOLSKY

Classic dishes get a modern twist at the Grand Café Krasnapolsky, with magnificent views of Dam Square. Pair your coffee with delectable delights from the one-of-a-kind “Cake Room” and elevate the iconic Afternoon Tea experience with a glass of Champagne.

Opening hours: 10:00 am – 10:00 pm

## THE CHAMPAGNE ROOM

Special occasions are made more memorable with an exquisite selection of Champagnes by the glass, paired with delicious bites. Add a little sparkle to the moment in a stunning setting with accents of gold and glamour.

Opening hours: 10:00 am – 11:00 pm



The White Room



Grand Café Krasnapolsky



The Champagne Room



## BAR THE TAILOR

Creative cocktails and delicious bites are tailored to taste at this award-winning destination. Relax in cosy leather armchairs or out in the tranquil courtyard and discover a peaceful retreat from the city bustle at Bar The Tailor.

Opening hours: 5:00 pm – 1:00 am

## IN-ROOM DINING

International and gourmet flavours are on hand at any time of the day or night. Whether it's breakfast in bed, a healthy midday snack, an indulgent dessert or midnight bite, relax in comfort and let us bring the culinary experience to your room.

Opening hours: 24/7

## WINTERGARDEN

A sumptuous breakfast buffet is laid out under the 19th-century glass roof of the Wintergarden. Start the day with your choice of indulgent pastries and cold cuts or irresistible waffles, pancakes and eggs, made to order from live cooking stations.

Opening hours: Monday – Friday: 6:30 am – 11:00 am  
Saturday and Sunday: 6:30 am – 12:00 pm



Bar The Tailor



In-room Dining



Wintergarden



Designer Dining by Anantara



Designer Dining by Anantara

#### DESIGNER DINING BY ANANTARA

With a menu designed in collaboration with a dedicated chef and sommelier, Anantara's signature private dining experience is served by an attentive butler at an elegant candlelit table overlooking the city in the Royal Suite. Designer Dining brings the perfect proposal, birthday or anniversary to life.

#### SPICE SPOONS BY ANANTARA

An opportunity to immerse in Amsterdam's vibrant mixology scene, Spice Spoons at Anantara Krasnapolsky invites guests to craft creative cocktails with our award-winning and inventive Spirits Guru using top-shelf Dutch spirits from Wynand Fockink. The class is followed by a guided visit to the distillery and a tasting.



Spice Spoons by Anantara












## Meetings & events

In the heart of the city, overlooking Dam Square and the Royal Palace, Anantara Grand Hotel Krasnapolsky Amsterdam is the ideal location for memorable events imbued with a sense of place and elevated by authentic Dutch hospitality.

The hotel's 15 state-of-the-art event venues are visually impressive and include modern audio-visual equipment, LCD displays, WiFi and air-conditioning. With capacities ranging from 10 to 1,500, these versatile spaces provide a unique backdrop for small-to-large-scale gatherings.

From planning to execution, a team of dedicated meeting and event specialists is on hand every step of the way to ensure every element flows seamlessly, so hosts and guests can relax and enjoy every moment.

Our in-house gastronomy elevates any occasion, whether it's a board meeting coffee break, cocktails for an elegant reception or Michelin-starred cuisine for a gala banquet. And with access to the finest local suppliers, our event experts can source everything from themed décor to live music and entertainment to make each event an unforgettable success.

| Meeting rooms                 | Area            |       | Dimensions<br>(in M L x W x H) | <br>Theatre | <br>Class-<br>room | <br>U-Shape | <br>Square | <br>Banquet | <br>Recep-<br>tion | <br>Cabaret | Daylight |
|-------------------------------|-----------------|-------|--------------------------------|--|---|--|--|--|---|--|----------|
|                               |                 |       |                                |  |   |  |  |  |   |  |          |
| Grand Ballroom                | m <sup>2</sup>  | 510   | 30 x 17 x 7.5                  | 700  | 346   | 90   | 50   | 320  | 600   | 320  | NO       |
|                               | ft <sup>2</sup> | 5,490 |                                |  |   |  |  |  |   |  |          |
| Wintergarden                  | m <sup>2</sup>  | 462   | 33 x 14 x 13                   | -  | -   | -  | -  | 320  | 600   | 288  | YES      |
|                               | ft <sup>2</sup> | 4,973 |                                |  |   |  |  |  |   |  |          |
| Emerald I, II<br>or III       | m <sup>2</sup>  | 71    | 8.3 x 8.6 x 4                  | 81   | 27  | 24   | 18   | 50   | 60  | 32   | YES      |
|                               | ft <sup>2</sup> | 765   |                                |  |   |  |  |  |   |  |          |
| Emerald I + II<br>or II + III | m <sup>2</sup>  | 143   | 16.6 x 8.6 x 4                 | 179  | 63  | 48   | 24   | 110  | 125   | 64   | YES      |
|                               | ft <sup>2</sup> | 1,539 |                                |  |   |  |  |  |   |  |          |
| Emerald I, II<br>and III      | m <sup>2</sup>  | 215   | 25 x 8.6 x 4                   | 280  | 150   | 66   | 32   | 170  | 225   | 96   | YES      |
|                               | ft <sup>2</sup> | 2,315 |                                |  |   |  |  |  |   |  |          |
| Opal I                        | m <sup>2</sup>  | 137   | 10.5 x 12.5 x 4                | 160  | 60  | 30   | 20   | 80   | 100   | 60   | YES      |
|                               | ft <sup>2</sup> | 1,475 |                                |  |   |  |  |  |   |  |          |
| Opal II                       | m <sup>2</sup>  | 189   | 14.5 x 12.5 x 4                | 240  | 110   | 42   | 30   | 120  | 150   | 110  | YES      |
|                               | ft <sup>2</sup> | 2,035 |                                |  |   |  |  |  |   |  |          |
| Diamond                       | m <sup>2</sup>  | 240   | 24 x 10 x 3                    | 333  | 150   | 90   | 60   | 140  | 225   | 128  | YES      |
|                               | ft <sup>2</sup> | 2,584 |                                |  |   |  |  |  |   |  |          |
| Ruby                          | m <sup>2</sup>  | 210   | 27 x 7.8 x 3.6                 | 252  | 90  | 66   | 60   | 120  | 175   | 120  | YES      |
|                               | ft <sup>2</sup> | 2,261 |                                |  |   |  |  |  |   |  |          |
| Jade                          | m <sup>2</sup>  | 42    | 8.2 x 5.1 x 2.5                | 50   | 12  | 21   | 18   | 20   | 50  | 16   | YES      |
|                               | ft <sup>2</sup> | 450   |                                |  |   |  |  |  |   |  |          |
| Amber                         | m <sup>2</sup>  | 130   | 15.5 x 6.3 x 3.4               | 70   | 54  | 42   | 42   | 70   | 90  | 56   | YES      |
|                               | ft <sup>2</sup> | 137.8 |                                |  |   |  |  |  |   |  |          |
| Boardroom I, II<br>or III     | m <sup>2</sup>  | 13.5  | 4.5 x 3 x 2.5                  | -  | -   | -  | 8  | 8  | -   | -  | NO       |
|                               | ft <sup>2</sup> | 151   |                                |  |   |  |  |  |   |  |          |
| Noble                         | m <sup>2</sup>  | 44    | 7 x 6 x 2.5                    | 50   | 24  | 21   | 18   | 20   | 40  | 20   | YES      |
|                               | ft <sup>2</sup> | 144.4 |                                |  |   |  |  |  |   |  |          |

m<sup>2</sup> = square metres, ft<sup>2</sup> = square feet, m = metres, ft = feet





## Weddings & special occasions

At Anantara Grand Hotel Krasnapolsky Amsterdam, wedding celebrations are stylish and utterly bespoke. Relax with the support of a team of experienced planners and chefs, with every aspect tailored to your desires. Exchange vows in the historic Wintergarden – the perfect backdrop to any grand celebration, or say “I do” in an intimate ceremony surrounded by the magnificence of the White Room or the Royal Suite.

Whether it's a private gathering of your nearest and dearest or a lavish affair for up to 1,500 guests, Anantara Krasnapolsky ensures that your special day is just as individual as you are with a team of experienced planners and chefs to tailor every element to your taste.

Luxurious suites welcome newlyweds, while honeymoon experiences include a Champagne breakfast in bed, sensual spa experiences, a romantic picnic, candlelit dinner or unforgettable stays in Anantara Hotels & Resorts across the globe.



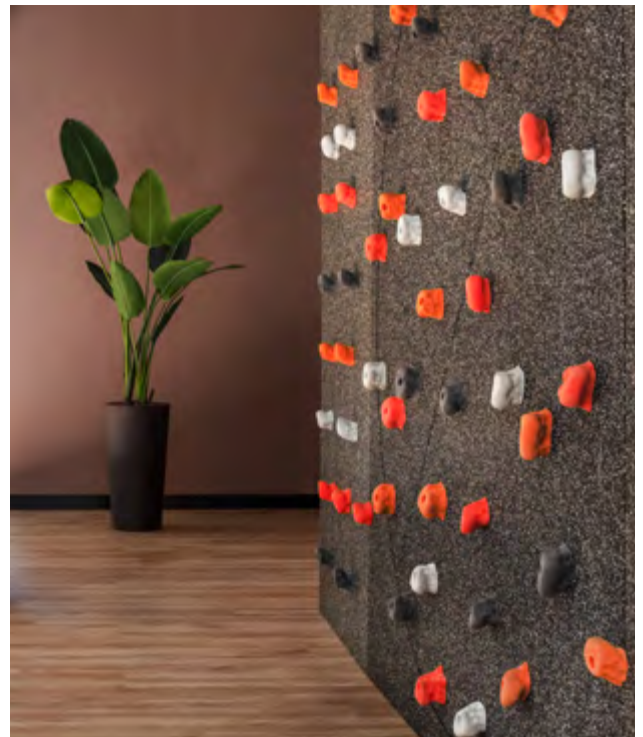
# Recreation & leisure

Anantara Krasnapolsky strikes the ideal balance of bustling business hub, peaceful retreat and authentic city discovery. While comprehensive business facilities ensure seamless productivity, and the hotel's location conveniently connects guests with all the action of Amsterdam, a selection of world-class wellness facilities and recreation experiences make unwinding easy.

Invigorate before a meeting with a bike ride through the city or wind down at the end of the day with a well-deserved spa experience. Fire up fresh ideas as you sail Amsterdam's canals or explore its famous museums, and stay fit and healthy with a personal trainer.

## LEISURE FACILITIES

- 24-hour gym
- Bike tours
- 360-degree climbing wall
- Personal trainer on demand







# Anantara Spa

A tranquil sanctuary in the heart of the city invites guests to indulge in expert pampering, blissful solo time or a shared wellness experience with someone special.

At Anantara Spa, experienced therapists offer healing rituals, including scrubs, wraps and soothing massages as well as rejuvenating and beautifying facials using nature's finest ingredients to nourish and soothe.

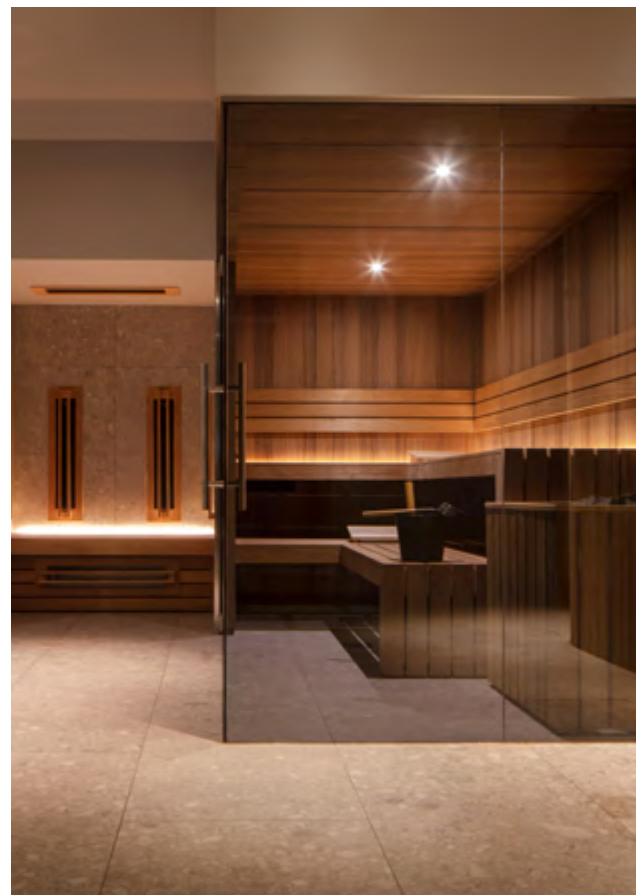
## SPA TREATMENTS

Signature experiences include the Anantara Bespoke Massage, which combines deep tissue, stress release and Thai massages with aromatic oils, and the Lavender Serenity Sleep Ritual, which addresses dehydration and jet lag with a hydrating facial mask and a relaxing massage with calming lavender to prepare the body for a peaceful night's rest.

For results comparable to non-invasive aesthetic procedures, guests can opt for the Pure Collagen Facial, which transforms the skin with Swissline's premium products formulated with pure collagen, peptides, pure silk and plant-based growth factors.

## SPA FACILITIES

- Three single treatment rooms
- One couple's treatment room
- Traditional sauna
- Steam room
- Infrared cabinet
- Experience shower
- Indoor and outdoor relaxation areas





City of Diamonds

# Anantara experiences

In the heart of a storied city, Anantara Grand Hotel Krasnapolsky is perfectly situated for immersive excursions, cultural and culinary delights, and historic heritage.

Our carefully selected experts and insiders offer an array of organised and do-it-yourself experiences designed to connect guests more deeply to this iconic destination.

## CITY OF DIAMONDS

With a centuries-old tradition of diamond trading, Amsterdam is a city that sparkles. Discover how stones are cut and polished at a family-run atelier and get an insight into how rare gems are assessed. Sip Champagne as the experts clean your own precious pieces before returning to the hotel by canal boat or a chauffeured Bentley.

## TULIPS IN BLOOM

From March to May, the city and its surrounding countryside come alive in a riot of colour as the famous Dutch tulips bloom. Visit a museum to learn more about over 700 species and wander among them in a beautiful garden. Head out into the vibrant fields for a picnic and gather your own bouquet.



Tulips in Bloom



Tulips in Bloom



### SPRIT OF THE NETHERLANDS

Join our Guru at Wynand Fockink, where we source our own in-house spirits, to taste genever – Dutch gin – distilled on-site since 1679. Discover the innovations of two locals at the Spirit Union Distillery, where rums blend with botanicals. Return to Bar The Tailor and shake things up with an original cocktail creation to bottle and take home.

### BITES AND BIKES

With a local connoisseur at your side, hop on an Anantara bike to ride past historical landmarks, taste Dutch delights and hear captivating stories. Stop at Albert Cuyp market to savour warm Stroopwafels, made right in front of you. End the adventure on a high note with an exclusive local genever at one of Amsterdam's oldest distilleries.

### PRIVATE CINEMA SCREENING

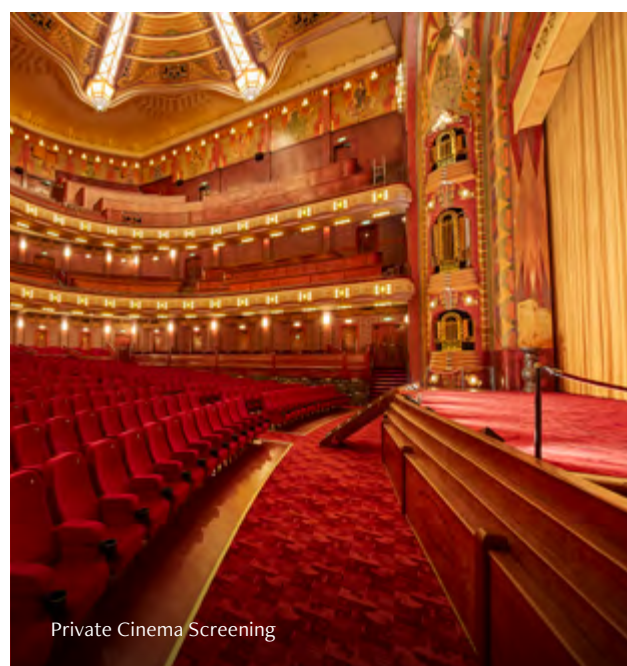
The Royal Theatre Tuschinski is a national monument with a storied history. Since its grand opening in 1921, this iconic venue has hosted numerous film premieres and was recently recognised as the most beautiful cinema in the world. Enjoy an exclusive private movie or concert screening followed by dinner at Anantara Grand Hotel Krasnapolsky Amsterdam.



Spirit of the Netherlands



Bites and Bikes



Private Cinema Screening



# Travel notes

**Voltage:**

230 V, 50 Hertz

**Currency:**

Euro (EUR)

**Time Zone:**

Winter GMT

Summer GMT +1

**Special Holidays:**

King's Day - 27 Apr

Liberation Day - 5 May

Sinterklaas (*St. Nicholas' Eve*) - 5 Dec

**Airport transportation / access**

Amsterdam Schiphol Airport is approximately a 25-minute drive from the hotel and offers direct and connecting services to various destinations worldwide.

Our team is delighted to arrange private transfers.

The direct train service operates every 17 minutes to and from Schiphol Airport and arrives at Amsterdam Central Station in just 15 minutes.

Amsterdam Schiphol Airport (AMS): 25 km

Dam Square tram stop: 0.1 km

Rokin Metro station: 0.3 km

Amsterdam Central station: 0.7 km

ANANTARA GRAND HOTEL KRASNAPOLSKY AMSTERDAM

Dam 9, 1012 JS Amsterdam | +31 20 499 0163 | [krasnapsky@anantara-hotels.com](mailto:krasnapsky@anantara-hotels.com)

[ANANTARA.COM](http://ANANTARA.COM)