



**THE
YELLOW FIN
CLUB**





*the sea
connects
all things
leading
you to the
yellowfin*



SEABUCKTHORNE

tequila

seabuckthorne

kaffir

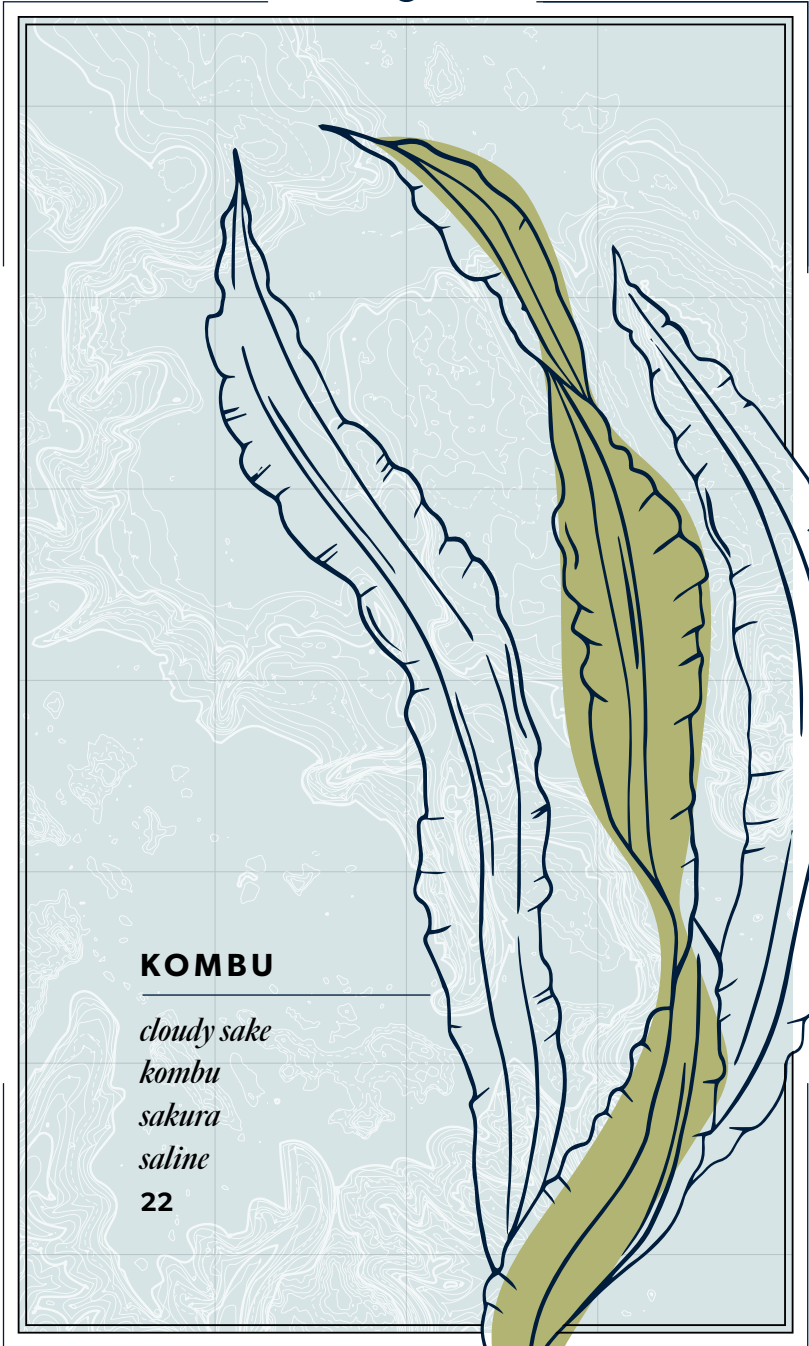
agave

lime

fire water

22





KOMBU

cloudy sake

kombu

sakura

saline

22



WAKAME

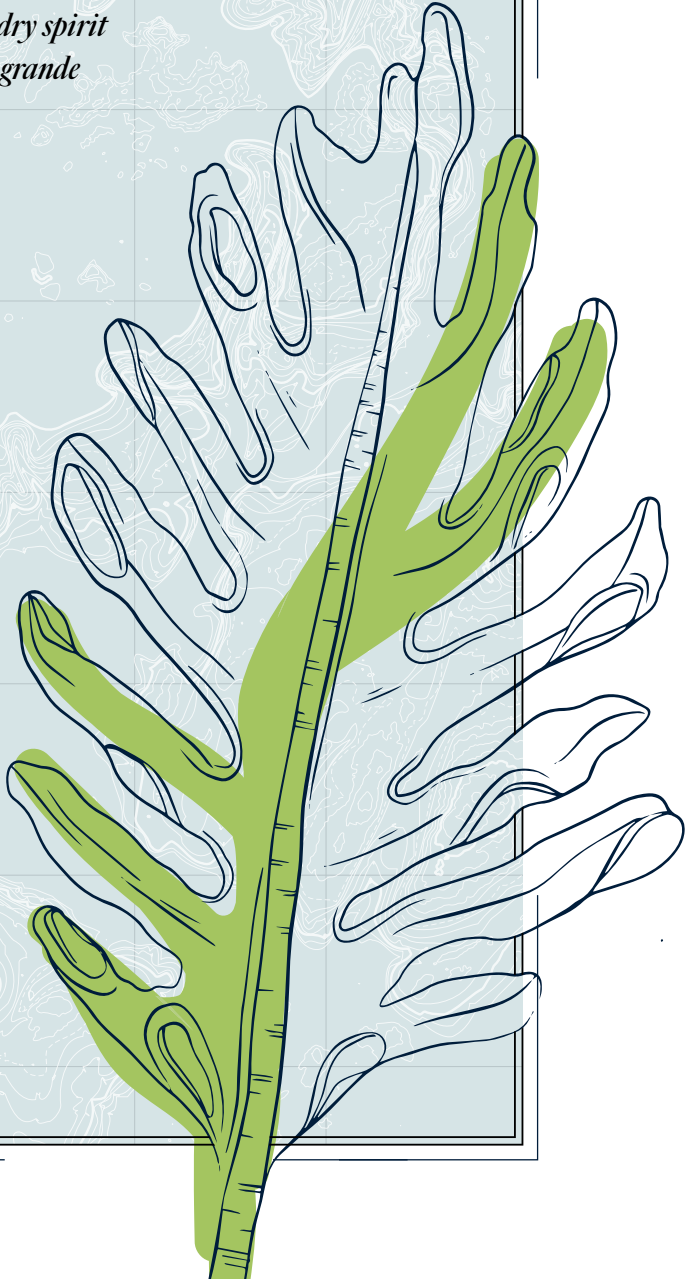
lyre's london dry spirit

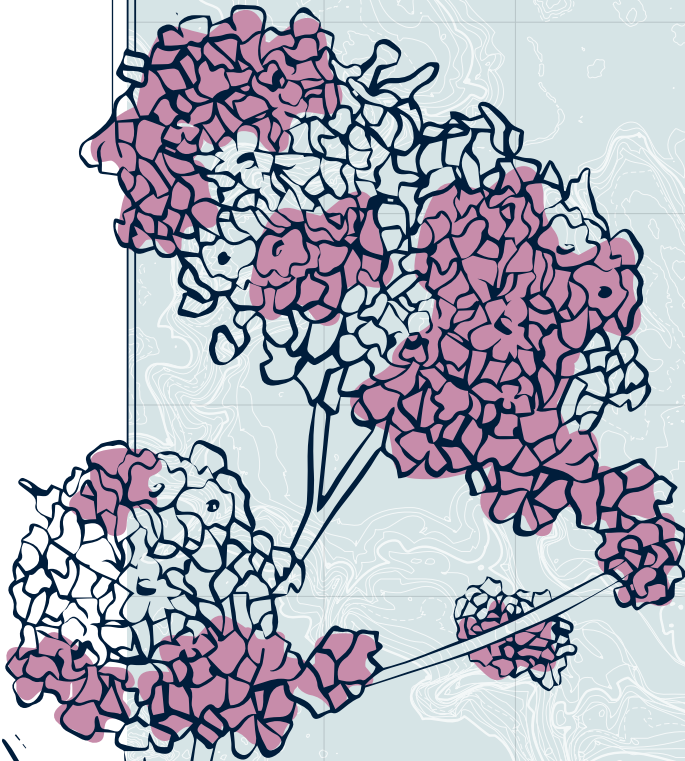
lyre's classico grande

wakami

lemon

22





COASTAL MARJORAM

pisco
marjoram
madagascan vanilla
acid
soda
22



DRAGONFRUIT

vodka

dragonfruit

rhubarb

coconut

lemon

22



SAGE

gin
noilly prat
sage
saline
olive oil
22





LAVENDER

lyre's dark cane

lyre's light cane

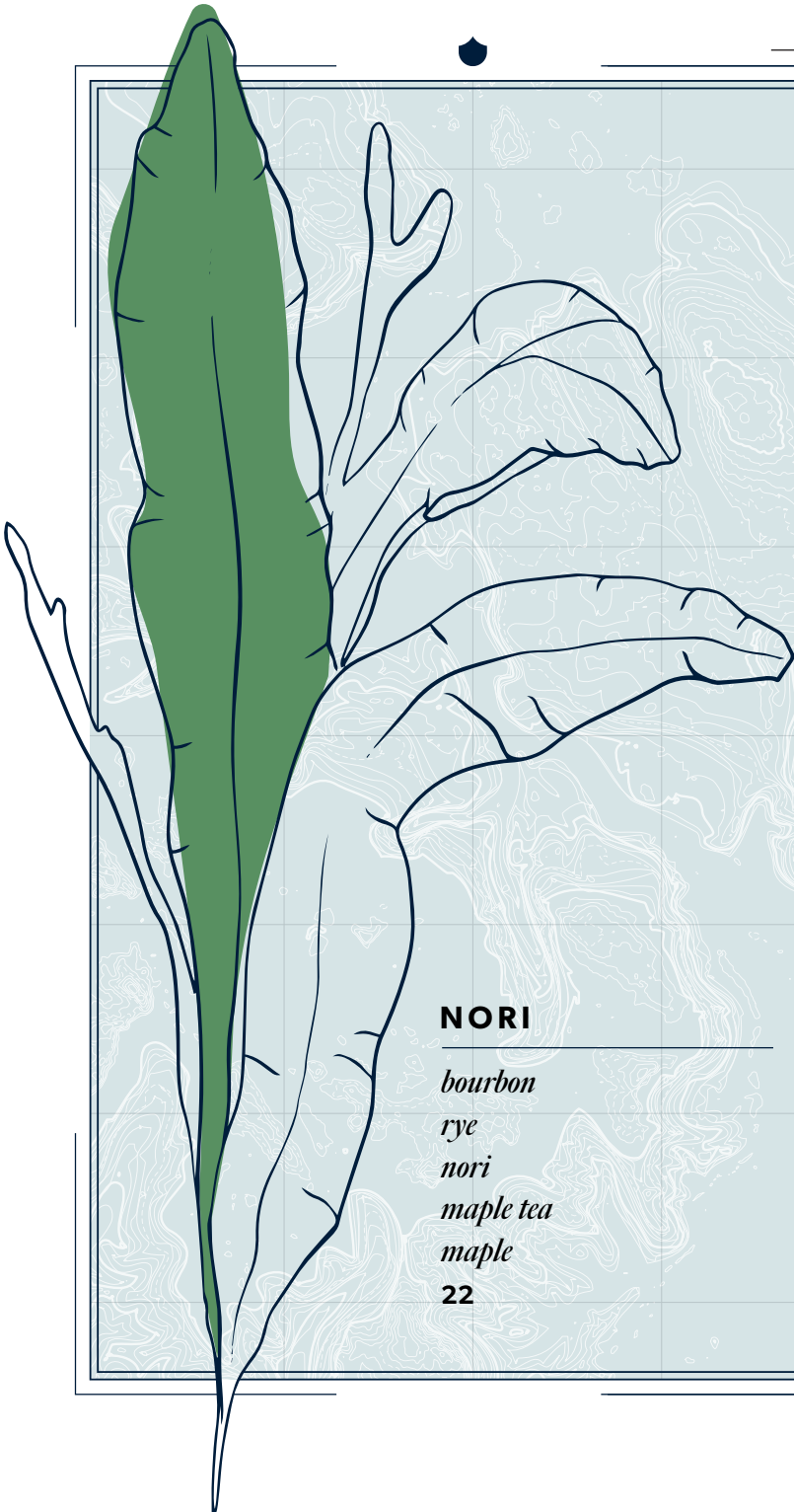
lavender

clove

citrus

22





NORI

bourbon

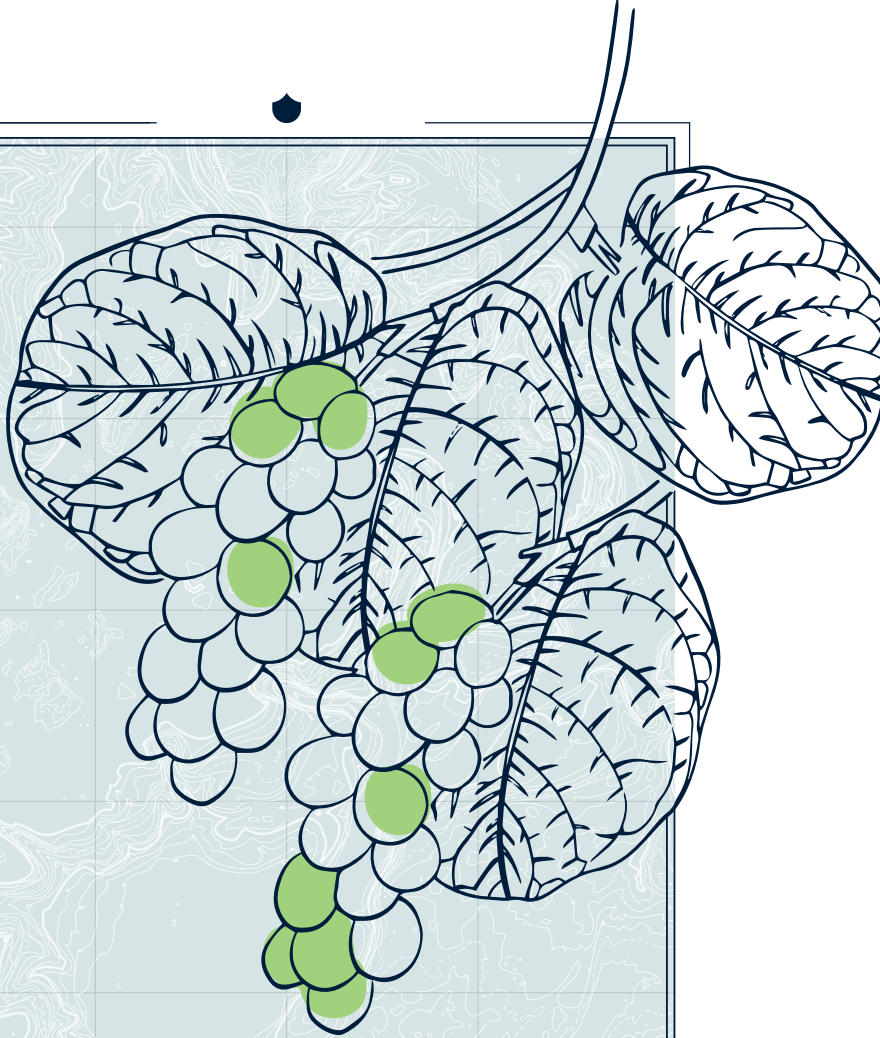
rye

nori

maple tea

maple

22



SEA GRAPE

cognac
sea grape
demerara
lemon
champagne



BLUE SPIRULINA

rum

demerara rum

velvet falernum

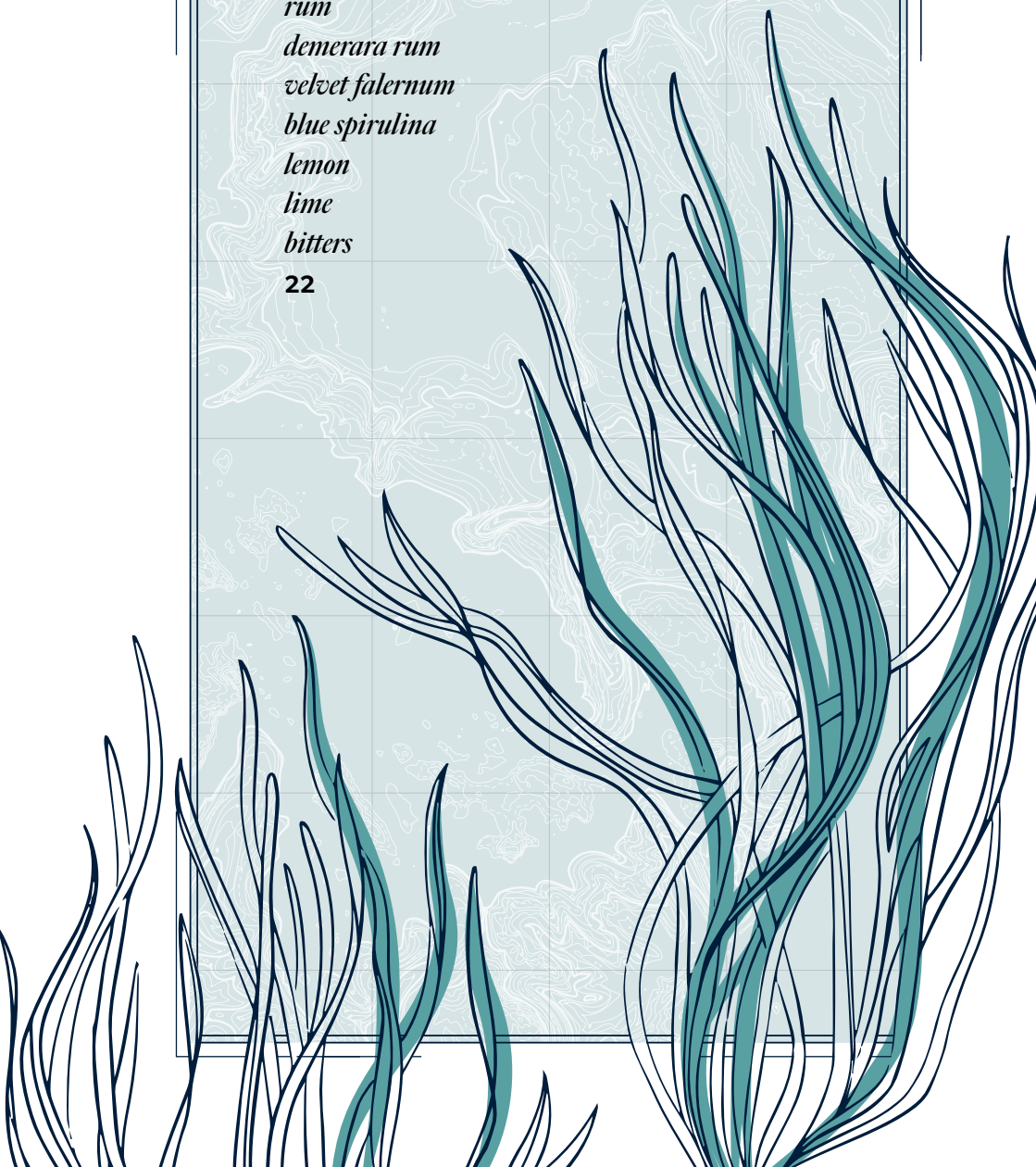
blue spirulina

lemon

lime

bitters

22





VODKA	<i>Ketel One</i>	17
GIN	<i>Beefeater</i>	16
	<i>Roku</i>	20
	<i>St. George Terroir</i>	23
GENEVER	<i>Bols Zeer Oude Genever</i>	16
RUM	<i>Doorly's XO Barbados</i>	18
	<i>El Dorado 12y</i>	20
	<i>Flor De Cana 18y</i>	18
	<i>Cachaca 51</i>	18
SCOTCH	<i>Monkey Shoulder</i>	16
	<i>Balvenie Caribbean Cask 14</i>	28

WHISKEY

USA	<i>Eagle Rare 10y</i>	23
	<i>Makers Mark</i>	16
	<i>Bulleirt Rye</i>	14
	<i>Michters US1 Original Sour Mash</i>	20
	<i>Michters US1 Unblended Small Batch</i>	26
	<i>Michters US1 Rye Straight</i>	24
JAPANESE	<i>Yamazaki 12y</i>	55
	<i>Yamazaki 18 y</i>	250
	<i>Hibiki 12y</i>	32
IRISH	<i>Tullamore Dew</i>	16

LIQUEUR	<i>Green Chartreuse</i>	16
AMARO	<i>Luxardo Maraschino</i>	16
OTHER	<i>Giffard Crème de Cassis</i>	16
	<i>Cherry Herring</i>	16
	<i>Velvet Falernum</i>	16
	<i>Pierre Ferrand Dry Curacao Orange</i>	16
	<i>Amaro Montenegro</i>	16
NON	<i>Lyre's classico grande Non Alcoholic</i>	16
ALCOHOLIC	<i>Lyre's London Dry</i>	16
	<i>Lyre's Dark Cane</i>	16
	<i>Lyre's Light Cane</i>	16
	<i>Lyre's American Malt</i>	16
